

Edgenuity UpSmart™



Assess. Adapt. Achieve.

 Edgenuity

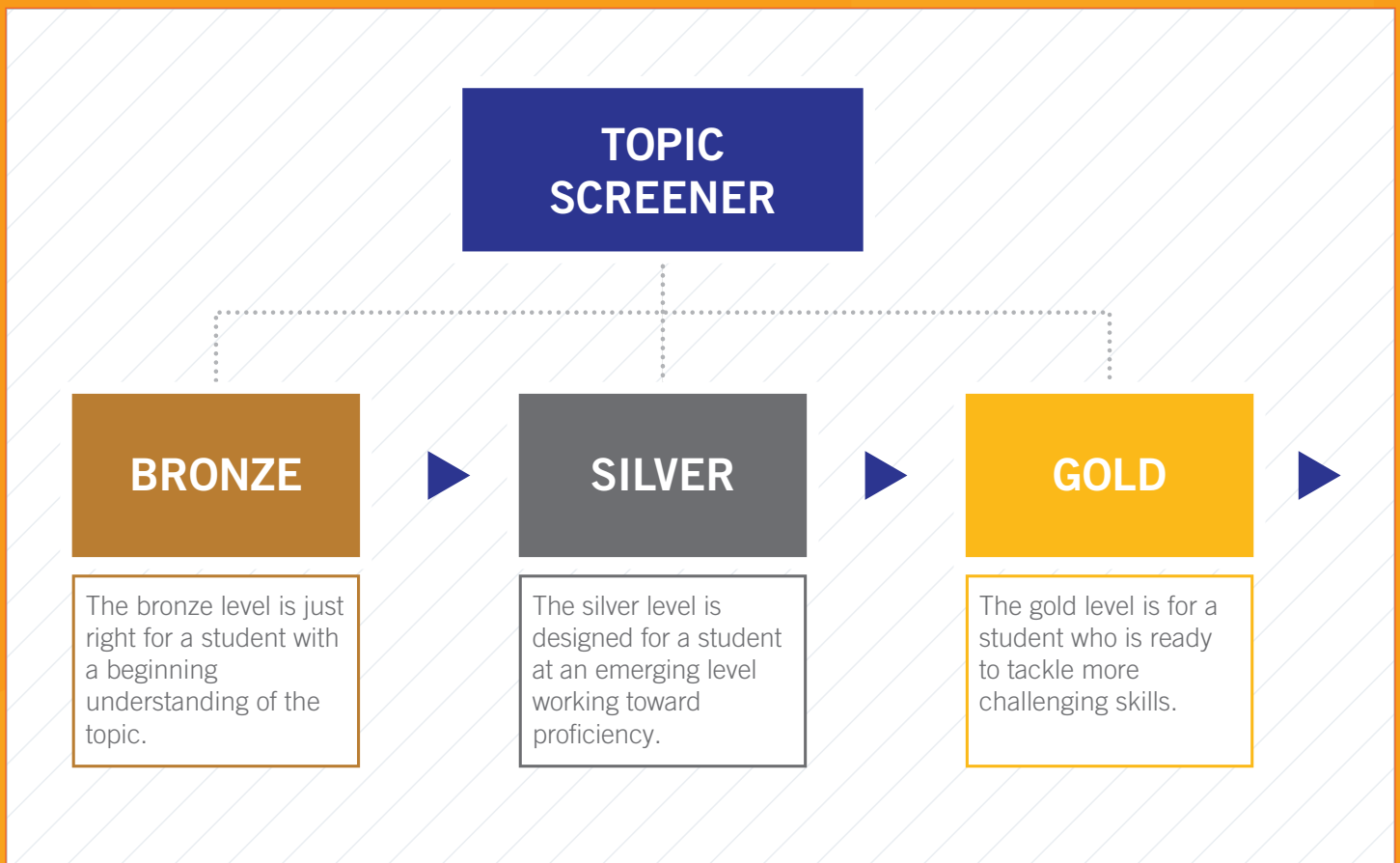
Ensure Success with Adaptive Learning

Every day, great teachers use the best curriculum resources to teach our students. Yet, many students struggle to make connections between what they are taught in the classroom and how those skills appear on high-stakes tests.

Introducing UpSmart™, a supplemental test readiness program designed to help all students in grades 6–8 demonstrate mastery of state standards in ELA and math. With a completely adaptive learning engine that combines assessment, instruction, and practice, UpSmart gives every student the support they need at exactly the moment they need it.

Targeted Assessment

UpSmart continually seeks to determine what each student is ready to learn and then provides the right level of instruction and practice for each topic. Students begin each topic with a very short, targeted assessment designed to place students into the right level for that topic.



The power of UpSmart lies in its ability to place each student into the right level for each topic and then to continually adjust the level of instruction, support, and practice each student receives.

Adaptive Practice and Instruction

Each level features a highly adaptive set of tasks that assess students' mastery of skills and triggers appropriate scaffolds and instruction. A variety of **technology-enhanced** items ensures exposure to the types of questions that students will encounter on assessments: students drag-and-drop numbers and words to construct equations and sentences, graph points and lines, create data displays, identify text and images in "hot spot" tasks, and write constructed responses.

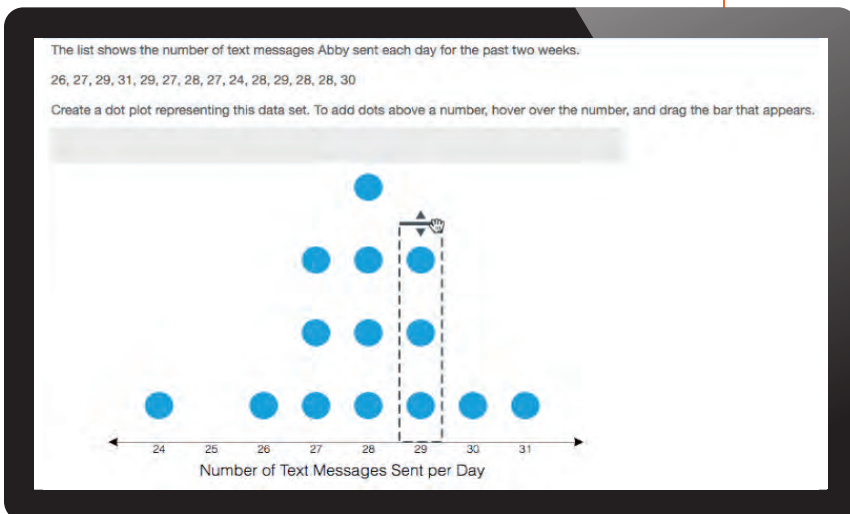
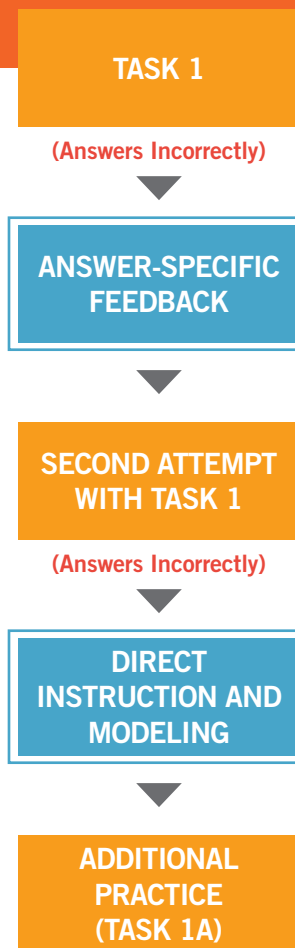
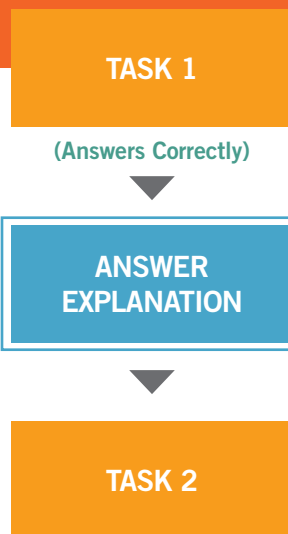
UpSmart continuously accumulates data about each student's understanding and adapts the difficulty of tasks and instruction, as well as the amount of practice, accordingly.



A student who completes tasks successfully and asks for no help will receive questions of increasing difficulty and move through the level quickly.



A student who struggles with tasks or repeatedly asks for hints will receive additional scaffolds and targeted reteaching, as well as additional practice tasks.



Just-in-Time Instruction

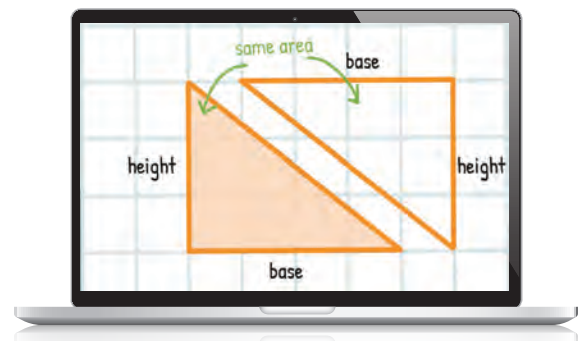
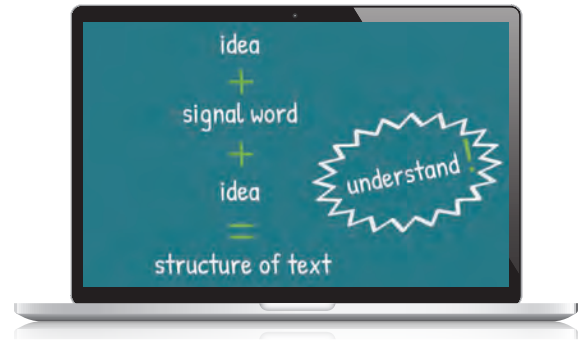
When a student struggles with a topic, UpSmart provides scaffolds to help students complete the task and develop a deeper understanding of the skill that is being assessed.

TOPIC INTRODUCTION VIDEO: Each topic begins with direct instruction to help students overcome the most common stumbling blocks for the skill. This video is required for students in the bronze level and is available for those in the silver level as needed.

HINTS: The first hint is designed to help students understand what the question is asking. Sometimes, that's all a student needs. However, a student can always ask for additional hints. For every hint requested, UpSmart records that the student did not know how to do this problem on his own.

ANSWER-SPECIFIC FEEDBACK: For each task, students will receive feedback that is specific to the student's response. For example, a student whose response shows a common misconception might receive feedback that will help the student overcome this error in thinking.

DIRECT INSTRUCTION AND MODELING: If the student continues to answer incorrectly, a Show Me video will guide the student through the question—introducing appropriate strategies, modeling expert thinking, and teaching how to approach similar tasks in the future.

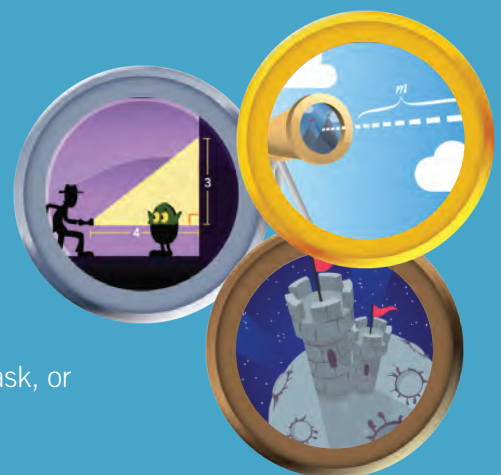


Challenges

In order to demonstrate mastery of standards, students must be able to apply multiple skills to solve complex problems and tasks. As students complete specific combinations of topics, they unlock a Challenge, where they will have the opportunity to develop a deeper level of mastery.

Motivating and Rewarding Students

The student dashboard, as well as UpSmart's badges, encourage students to monitor their progress and celebrate their successful mastery of skills. Students will also accumulate trophies for productive behaviors like increasing time on task, showing persistence while working on a difficult task, or completing Challenges.





UpSmart can be used in various ways throughout the school year to provide students with an opportunity to practice and master state standards:

- Companion to the core curriculum
- Test-readiness program
- Study skills class
- Summer school
- Before/after school
- Saturday academy

UPSMART ACADEMIC ADVISORS

Dr. Peter Afflerbach
Professor of Education, University of
Maryland

Dr. Charles M. Patton, PhD
Principal Scientist (ret.), SRI International

edgenuity.com/upsmart

877.7CLICKS

solutions@edgenuity.com



Copyright © Edgenuity Inc