

Edgenuity MyPath[®] for Grades K–5

A Special Invite for Elementary Learning Partners this Summer



Experience the same **award-winning Pathblazer** content on a next generation platform

Available in Summer 2021, Edgenuity's next generation of MyPath will be open to elementary learning partners using NWEA[®] MAP[®] Growth[™] or Renaissance[®] Star[®] assessments.

The new MyPath personalized learning program for grades K–5 combines the research-proven instruction students love from Pathblazer[®] with over 800 new reading and math activities and 500 reteach worksheets on a brand-new platform. Teachers can differentiate instruction with high-impact lessons and activities which adapt learning and deliver actionable insights in real-time, so they can be much more effective and efficient with their time. We invite elementary partners with NWEA or Renaissance[®] Star[®] integrations to gain early access to the new MyPath's K–5 content to help you maximize classroom learning and student engagement.

Teachers and students will be able to use the early-access program on our new, innovative platform at no additional cost while still having access to Pathblazer.

SIGN UP HERE

Or visit edgenuity.com/personalized-learning-program/ for more information.

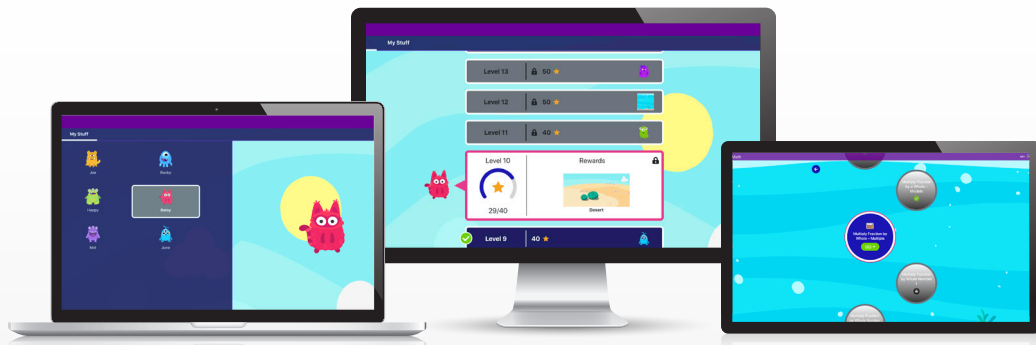
Maximize learning and get students who have fallen behind back to grade-level more quickly

Teachers can use the new MyPath to create a student's individualized learning path or integrate NWEA MAP[®] Growth[™] or Renaissance[®] Star[®] data to deliver **an adaptive sequence of high-impact, prioritized lessons** that promotes confidence, engagement, and conceptual understanding through a gradual-release instructional model proven to improve scores¹.

With MyPath, **teachers are empowered to drive learning outcomes** with student-focused technology that creates effective, personalized learning paths using:

- **A RICH LIBRARY** of developmentally appropriate content for struggling students so they can still engage with content at their age level even though they are behind.
- **ONGOING MASTERY CHECKS** that adapt learning to each student's level of understanding after initial placement to keep learning focused on accelerating toward grade-level work.
- **NEXT-GENERATION PLATFORM** with interactive learning that rewards students' progress and allows them to customize their experience.
- **ROBUST SUPPORT** for students with special needs and English learners. Including a text translation tool in over 60 languages, text-to-speech read-aloud, video captions and transcripts, and more.
- **TEACHER TOOLKITS** to help educators differentiate instruction and re-teach skills or lessons students continue to struggle with.
- **CLASS SUMMARY DASHBOARD** that makes it easy for teachers to measure growth, pinpoint skill gaps, prioritize lessons, and monitor student engagement with actionable insights and offline resources.

MyPath **Early Access** Program Overview



By participating in the Early Access Program, you will help us improve your overall teaching and learning experience. You will be the first to use major feature enhancements and your elementary students will have the opportunity to improve their reading and math skills before NWEA or Renaissance® Star® testing.

Participants can also participate in a research study to compare the achievements of MyPath students to equivalent groups. Research participants will receive data analysis and insights into the efficacy of the program in their schools at no cost.

Participants will also be asked to join a secure online community where they can share ideas and best practices with our development team and other users. The research and input you provide will help shape the future of personalized learning for millions of elementary students across the nation.

SIGN UP HERE

Or visit edgenuity.com/personalized-learning-program/ for more information.



877.7CLICKS | solutions@edgenuity.com